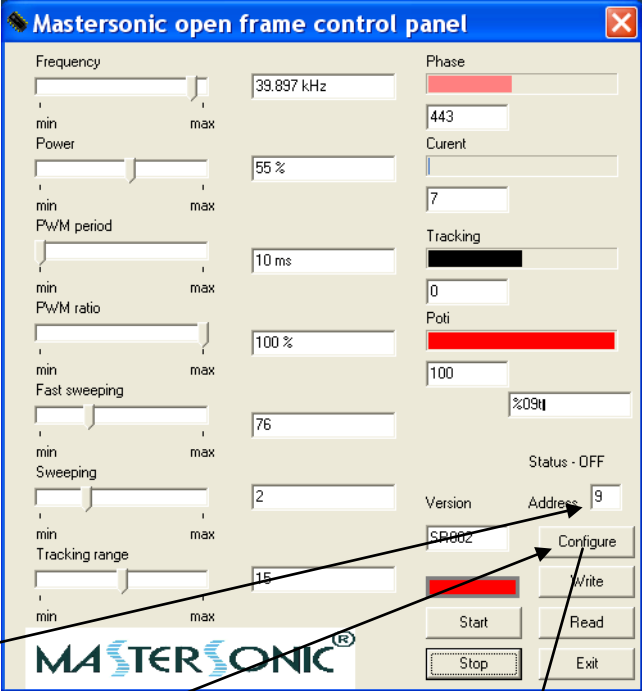
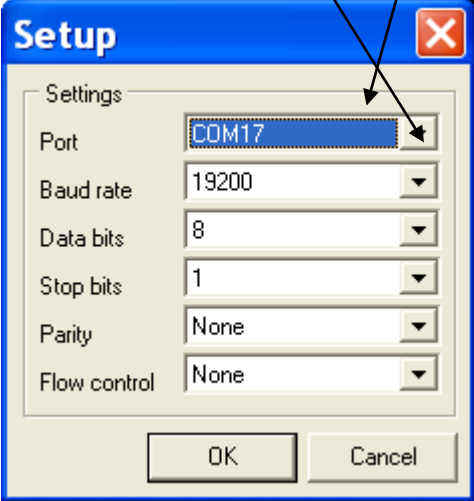


Activate the software "OF_net.exe". Find and download the software "OF_net.exe" here (and place it on your PC desktop): http://www.masteronics.com/documents/mmm_basics/mmm_power_supplies/msg-of-generators/latest/



This address is related to the label placed on the generator (here 9). Write the number you see on the generator.

Here we select COM-port, which is related to RS485-USB interface. Available com ports will be visible here (in this case COM17)



Press OK.